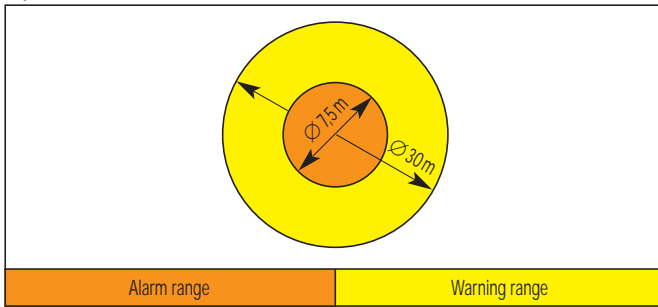


Flashing alarms 15 joules



ABL/ABS, ABL-DM

Optical data:



| Light intensity (DIN 5037): | ABL/ABS |
|-----------------------------|-------------|
| clear | 214 candela |
| white | 156 cd |
| yellow | 149 cd |
| amber | 122 cd |
| red | 28 cd |
| green | 60 cd |
| blue | 28 cd |

ABL/ABS

The powerful flashing light. Designed for giving outdoor alarm in large plant installations and wide rooms.

ABL-DM

Special model for military facilities. Maximum mechanical stability - shock class "A".

| | | | |
|-------------------|--------------------------------|--------------------------------|-------------------|
| IP 54 | +55 °C -30 °C | +70 °C -40 °C | 90% |
| Protective system | Operational temperature | Storage temperature | Relative humidity |

| | |
|--------------------|--|
| Flashing sequence: | 1 Hz = 60 flashes/min |
| Service life: | after 8.000.000 flashes still 70% light emission |
| Duty cycle: | 100% |

Electrical data: **AC** 50Hz/60Hz

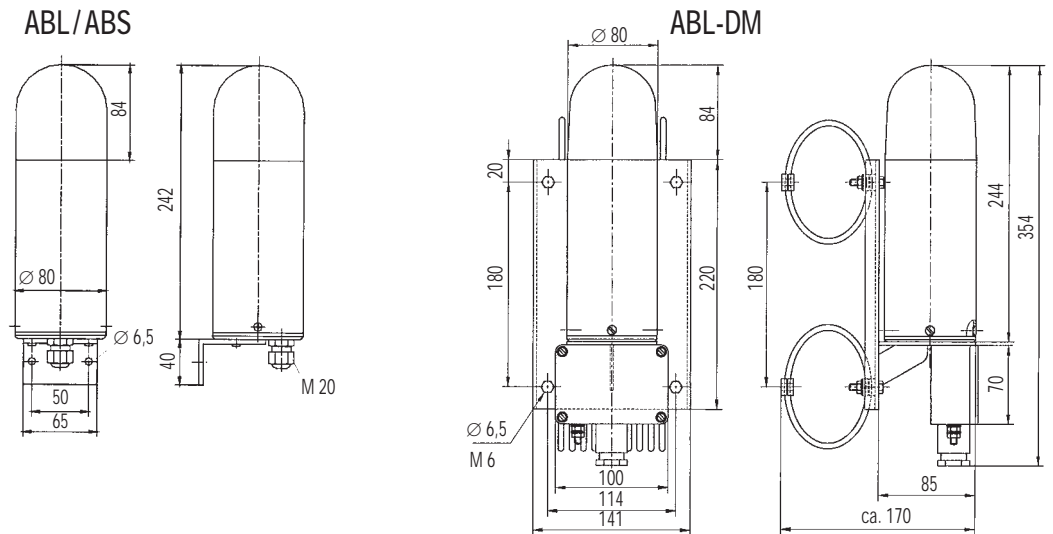
| Nominal voltage | Electrical data | ABL | ABL-DM |
|--------------------------------------|----------------------------------|------------------------|-----------------------|
| 230V | Voltage range: Rated current: | 185V ... 255V 0,19A | |
| 127V | Voltage range: Rated current: | 108V ... 140V 0,25A | |
| 110V | Voltage range: Rated current: | 95V ... 127V 0,33A | 93V ... 127V 0,25A |
| 48V | Voltage range: Rated current: | 40V ... 54V 0,37A | |
| 42V | Voltage range: Rated current: | 35V ... 50V 0,4A | |
| 24V | Voltage range: Rated current: | 20V ... 30V 0,8A | |
| Radio interference degree (VDE 0875) | | "N" | "K" |

DC

| Nominal voltage | Electrical data | ABS |
|-----------------|--|-----------------------------|
| 12V | Voltage range: Rated current: Rated power: | 10V ... 15V 1,50A 18W |
| 24V | Voltage range: Rated current: Rated power: | 18V ... 30V 0,70A 17W |
| 48V | Voltage range: Rated current: Rated power: | 40V ... 60V 0,35A 17W |
| 60V | Voltage range: Rated current: Rated power: | 50V ... 72V 0,26A 16W |

80V/110V DC on request

Technical data
and dimensions:

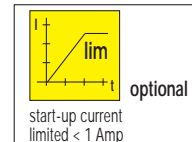


| Mechanical data: | ABL/ABS | ABL-DM |
|-------------------------|---|---|
| Cable gland | M 20 | M24 x 1,5 PG11 |
| Weight ABL version | 650 g | 2,8 kg |
| Weight ABS version | 800 g | |
| Material globe | Polycarbonate (PC) | |
| Material housing | Aluminium (Al Mg Si 1), yellow | Aluminium (Al Mg Si 1), shock class "A" |
| | PCB made of fibre-glass reinforced epoxy resin for thermic and mechanical protection. PCB dip-varnished to protect against moisture. Flash tube fastened with stainless steel clamp to prevent shock and vibration. | |
| Standard: | | |
| Operational temperature | -30 °C ... +55 °C | |
| Storage temperature | -40 °C ... +70 °C | |
| Relative humidity | 90% | |
| Protective system | IP 54 (EN 60529 by vertical installation) | |

Special version:



* on request



Accessories:



Approvals on request:



GL

Bundesmarine
SAK 3689-01

GOST

Sample order:

Model:
ABL

Voltage:
230 VAC

Globe colour:
YELLOW

Special version:
30 flashes/min

Approvals:
GL

Accessories:
external monitor for
flashing lights

Conformity to standard:

The optical properties of flashing lights comply with the European standard DIN EN 842, which is published under the title:

"Machine safety - visual alarm signals".

Requirements of the standard DIN EN 981, published under the title:

"Machine safety - system of acoustic/visual alarm signals and information signals" can be met.

The colour "red" as emergency signal and "yellow" as a warning signal comply with the requirements of IEC 73/DIN EN 60073/VDE 0199, published under the title:

"Coding for display devices and control components using colours and supplementary means".

References to visual alarm devices can be found in the following standards:

EN 60825-1 Radiation safety of laser devices defined by IEC 825 and DIN-VDE 0837

DIN EN 54 Fire alarm systems, design of

DIN 54113-2 Regulations for radiation protection applicable to technical operation of X-ray equipment up to 500 kV