

# Extremely loud – Acoustic alarm 140 dB (A)



PA 140

## Acoustic data:

Sound level:	140 dB (A) at 1 m distance, depending on sound pattern
Range:	2,5 km (up to 4 km)
Sound patterns:	32 patterns, see page 46
Sound patterns selectable by remote control:	3 patterns (basic tone + 2 additional sound patterns, remote controlled)
Duty cycle:	100%

## Mechanical data:

Protective system:	IP 55 (EN 60529)
Cable entry:	PG 9
Dimensions:	560 mm x 475 mm x 620 mm
Weight:	21 kg
Colour:	white
Material:	glass-fibre reinforced plastic
Accessories:	power supply AS 24/06 for 1 PA140 AS 24/15 for 2 PA140
<b>Standard:</b>	
Operational temperature	-25 °C ... +55 °C
Storage temperature	-30 °C ... +60 °C
Relative humidity	90%
Protective system	IP 55 (EN 60529)

## Electrical data:

**AC**

Nominal voltage:	230V
Voltage range:	207 V to 253 V
Rated current:	1 A

**DC**

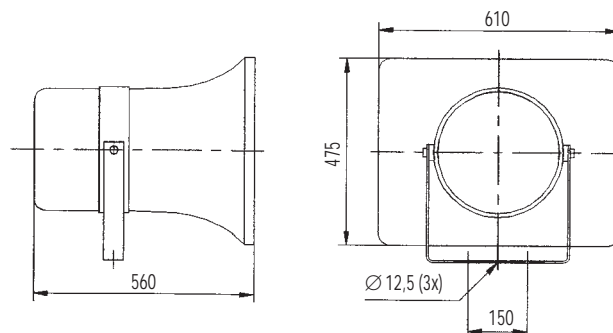
Nominal voltage:	24V
Voltage range:	21V to 28V
Rated current:	8 A

## ... with a sound level of 140 dB (A)

- safety within a radius of 4 kilometres
- simply uncompromising in performance
- ideal for use in all widespread areas, e.g. in quarries or at airports
- ... or as a warning device for civil defence

<b>IP 55</b>	<b>+55 °C</b>	<b>+60 °C</b>	<b>90%</b>
Protective system	Operational temperature	Storage temperature	Relative humidity

## Mechanical data and dimensions:



- the PA140 acoustic alarm is designed for continuous duty
- when compared to traditional systems such as sirens with 3-phase drive, it is remarkably efficient in producing a higher sound level
- as many as 3 different sound patterns are selectable by remote control
- in contrast to a siren, the PA140's output signal is directional
- with a selection of 32 different sound patterns, you can make sure devices installed near to each other produce slightly different sounds
- the device is weatherproof at an outside temperature between -25° and +55 °C
- the acoustic alarm is powered by a standard single-phase mains supply of 230 V<sub>eff</sub>
- alternatively, you can order the device for 24V/8A DC power supply and integrate it into a fire alarm system
- weighing in at 21 kg, the acoustic alarm is easy to install