

# Compact cooling units: DTFI / DTI 9021, 320 W

The optimum for space-saving, efficient air-conditioning

**DTFI 9021  
cutout compatible  
with filterfans  
PF 65.000 - PF 67.000  
see page 90**



- easy and quick to install, without any drilling (DTFI 9021)
- high-capacity performance in compact design
- ideal for small enclosures and control panels
- diagnosis report for status monitoring system
- low-profile design for integration into machine enclosures (DTFI 9021)
- DTFI 9021 cutout compatible with filterfans PF 65.000 - 67.000, PF 5.000, PF 6.000, PF 7.000, PF 6.500SL1 and PF 6.000SL2
- shallow installation depth when partially recessed (DTI 9021)
- optimum reliability with standard electronics (e.g. fault and door contacts)
- optional with integrated condensate evaporation



Cutout compatibility



Suitable for both 50 Hz and 60 Hz



Recessed installation (DTFI 9021)



Partially recessed installation (DTI 9021)



Level of protection in respect of enclosure (EN 60529)



Integrated condensate evaporation (optional extra)



Standard Controller

Refrigeration data	DTFI 9021					DTI 9021		
	Cooling capacity at A 35 / A 35 <sup>1)</sup>	320 W	320 W	340 W	230 W	290 W	320 W	320 W
Cooling capacity at A 45 / A 35 <sup>1)</sup>	250 W	300 W	330 W	220 W	280 W	250 W	300 W	330 W
Type of refrigerant	R134a							
Amount of refrigerant	350 g							
Thermostat setting	adjustable within a range of + 25 °C (+ 77 °F) to 45 °C (+ 113 °F), factory-set at 35 °C (+ 95 °F)							
Fault display: temperature inside enclosure	> + 50 °C (+ 122 °F) (factory-set)							
Ambient air temperature	+ 15 °C (+ 59 °F) ... + 45 °C (+ 113 °F)							
Air volume <sup>2)</sup> , external circuit	282 m <sup>3</sup> /h							
Air volume <sup>2)</sup> , internal circuit	282 m <sup>3</sup> /h							
Condensate discharge	condensate drain							

<sup>1)</sup> Refrigeration capacity according to EN 814

<sup>2)</sup> free-flow

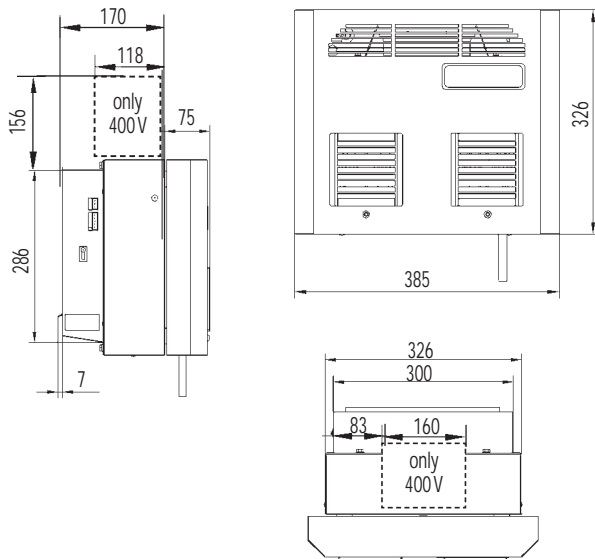
Electrical data	DTFI 9021					DTI 9021		
	Rated voltage	115 V	230V		400V		115 V	230V
Rated frequency	60 Hz	50 Hz	60 Hz	50 Hz	60 Hz	60 Hz	50 Hz	60 Hz
Voltage range	DIN IEC 60038							
Power consumption at A 35 / A 35 A 45 / A 35	240 W 230 W	230 W 260 W	240 W 290 W	200 W 230 W	200 W 230 W	240 W 230 W	230 W 260 W	240 W 290 W
Current consumption	2,7 A	1,6 A	1,6 A	1 A	0,9 A	2,7 A	1,6 A	1,6 A
Starting current	11,4 A	11,7 A	10,9 A	6,6 A	5,9 A	11,4 A	11,7 A	10,9 A

Supplementary data	DTFI 9021		DTI 9021
	Height	326 mm	464 mm
Width	385 mm		
Depth	252 mm		252 mm
Weight (without packaging)	16 kg	22 kg	17 kg
Orientation	vertical		
Unit construction	sheet steel		
Corrosion protection	standard: galvanized / electrostatically powder-coated (200 °C) RAL 7035, RAL 7032		
System of protection	IP 54 against the enclosure (EN 60529), when used as recommended IP 34 against the ambience (EN 60529), when used as recommended		
Standard scope of supply	operating instructions, technical datasheet, installation kit incl. plug-in connector		
Approvals	see overview cooling units / approvals		

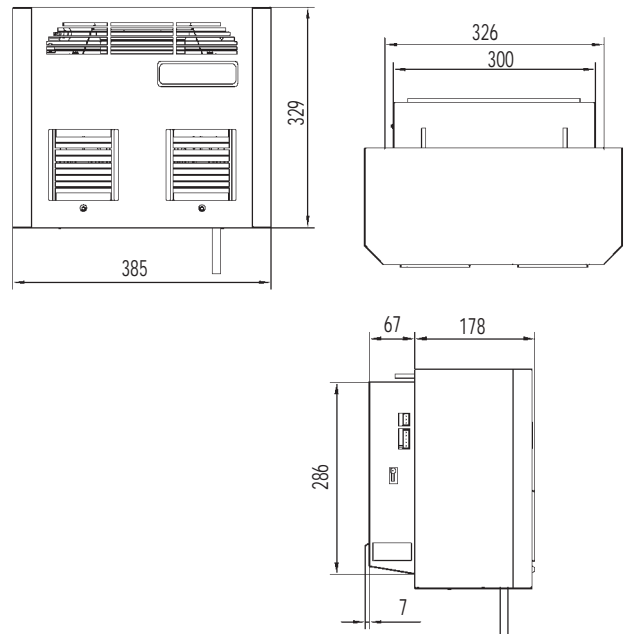
We reserve the right to technical alterations. Subject to correction. 075000053

**Mechanical data:**

**DTFI 9021**

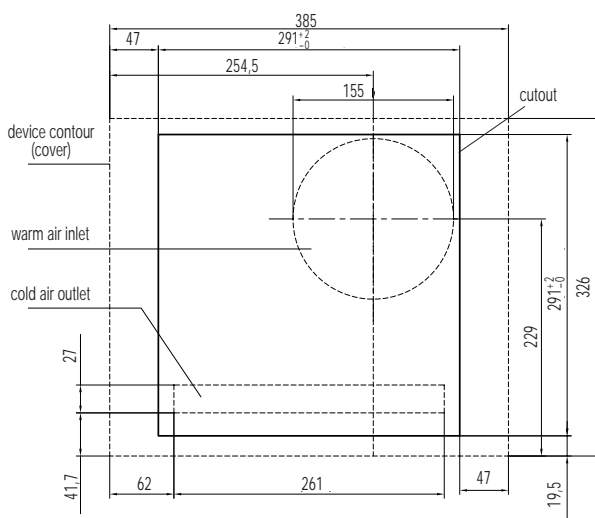


**DTI 9021**

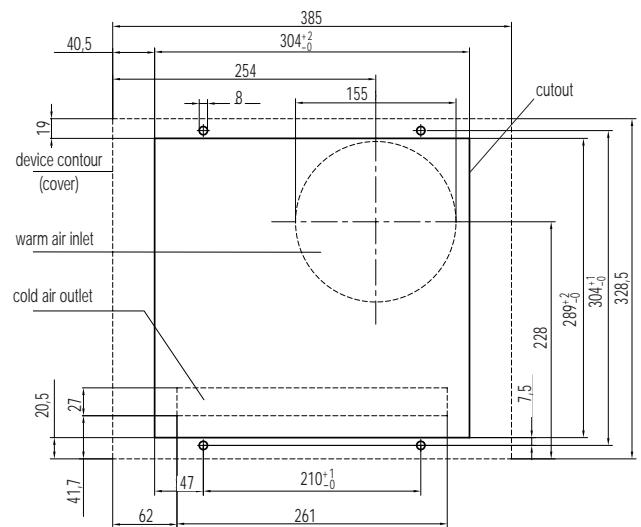


**Installation cutout:**

**DTFI 9021**



**DTI 9021**



**Characteristic curves: DTFI / DTI 9021 – Effective refrigeration capacity**

