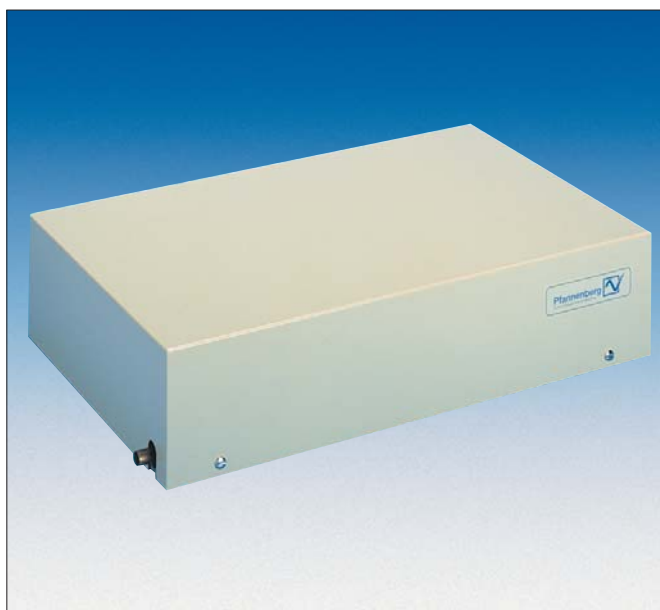


Air/Water Heat Exchanger: 2100 W and 1450 W for top-mounting



- flat gasket to protect against water penetration via top of the enclosure
- water circuit tested for 30 bar pressure
- temperature regulated by integrated thermostat and solenoid valve
- 10 bar operating pressure
- tubes and heat exchanger are available in stainless steel



Max. distance between air inlet and -outlet



Suitable for both 50 Hz and 60 Hz



Level of protection in respect of enclosure (EN 60529)



Optional extra

Refrigeration data	PWD5402	PWD 5302
Cooling capacity at W20/A35 – nominal conditions*	2100 Watt	1450 Watt
Cooling capacity at W10/A35 – nominal conditions*	3400 Watt	2150 Watt
Air volume	720 m ³ /h	500 m ³ /h
Water volume	400 l/h	
Water intake temperature	+20 °C	
Air intake temperature	+35 °C	
Noise level (1 m distance)	64 dB (A)	54 dB (A)
Duty cycle	100 %	

* water intake temperature +20 °C (W20) / +10 °C (W10), air intake temperature +35 °C, water volume= 400 l/h

Electrical data	PWD5402		PWD 5302
Rated voltage**	230 V	400 V - 480 V ***	230 V
Rated frequency	50Hz/60Hz	50Hz/60Hz	50Hz/60Hz
Voltage range	198 V ... 252 V	400 V - 480 V ± 10%	198 V ... 252 V
Power consumption	200 Watt	200 - 290 Watt	55 Watt
Current consumption	0,84 A	0,5 - 0,9 A	0,38 A
Starting current	4 A	4 A	3 A

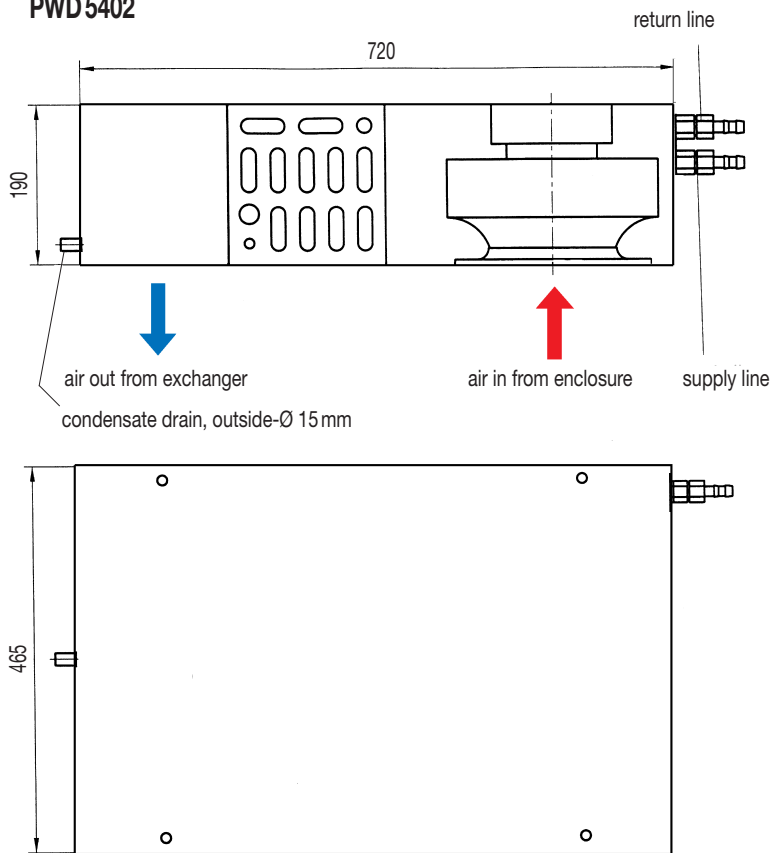
** other voltages available on request

*** rated voltage can be adjusted on the device within a range of 380-420 V (50 Hz) and 440-480 V (60Hz)

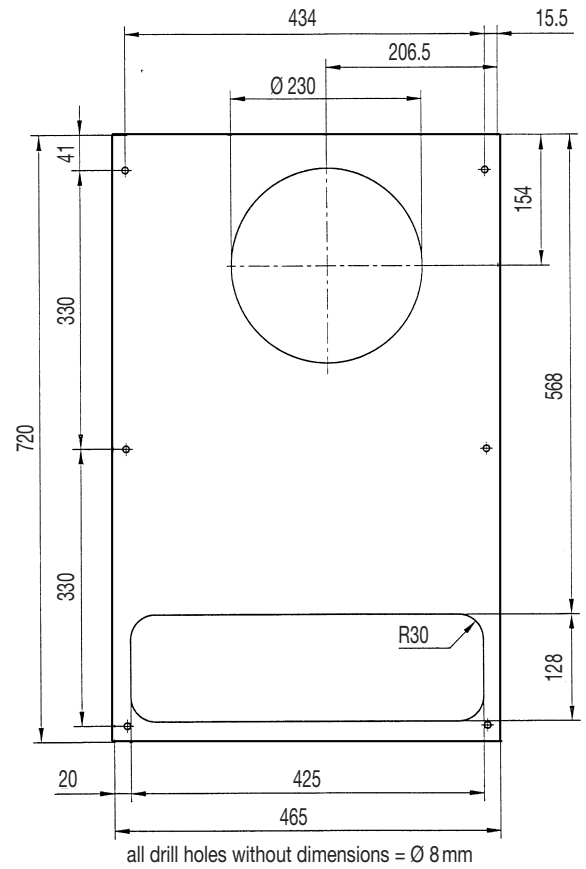
Supplementary data	PWD5402	PWD 5302
Weight (without packaging)	30 kg	21 kg
Connection to water supply	13 mm hose nipple, special connections available on request	
Orientation	horizontal	
Construction material	sheet steel (stainless steel available on request)	
Corrosion protection	galvanized / electrostatically powder-coated (200 °C)	
Colour	RAL 7035, RAL 7032 (european grey), other colours available on request	
Electric shock protection	according to EN 60529	
Climatic data	max. ambient temperature +60 °C max. relative humidity 90 %	
System of protection	IP 54 against the enclosure (EN 60529), when used as recommended	
Standard scope of supply	connection to water supply with inside taper, sealing material, fixing material, operating instructions	
Approvals	see overview cooling units / approvals	

Mechanical data:

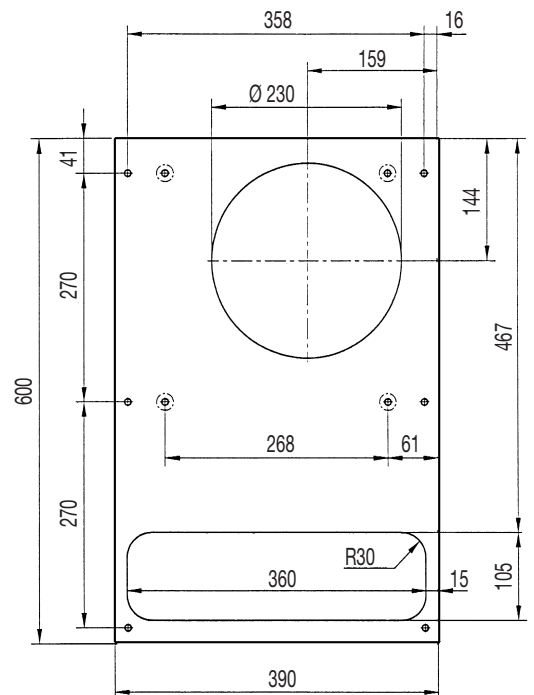
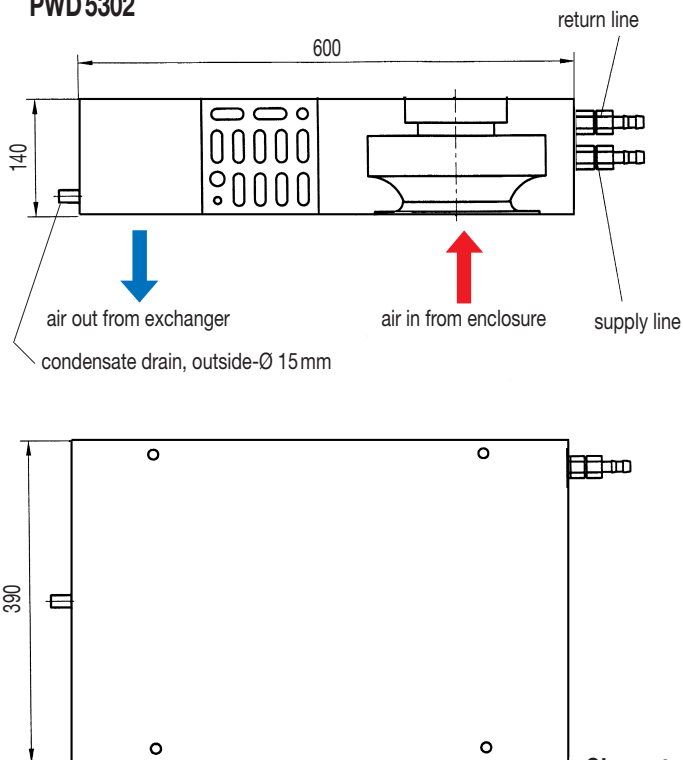
PWD 5402



Installation cutout



PWD 5302



Characteristic curves see page 74  only drill if enclosure depth 400 mm
all drill holes without dimensions = Ø 8 mm